

This is the glass that you have to choose from! You can mix and match any color scheme. The glass is listed from least expensive to most expensive.

## COE 96 Cathedrals



# COE 96 Opaques

**200SF**



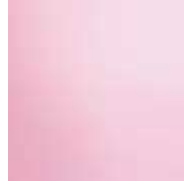
**209S**



**291-61SF**



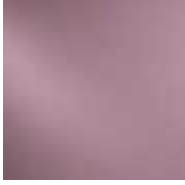
**290-72SF**



**240-72SF**



**240-74SF**



**60-520-96**



**234-72**



**230-76SF**



**230-72SF**



**60-421-96**



**238-72SF**



**233-74SF**



**233-75SF**



**223-72SF**



**220-76SF**



**60-755-96**



**222-72SF**



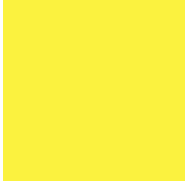
**60-782-96**



**226-74SF**



**260-72SF**



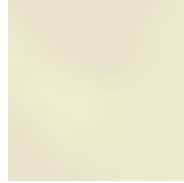
**267-72SF**



**60-355-96**



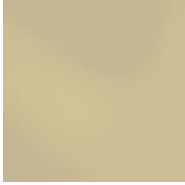
**210-71SF**



**210-72SF**



**216-71SF**



**60-2702-96**



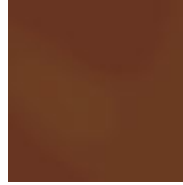
**60-602-96**



**60-2502-96**



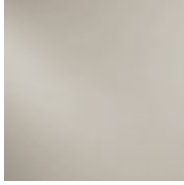
**211-74SF**



**1009SF**



**218-71SF**



**60-070-96**



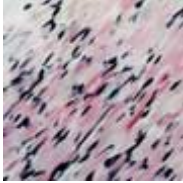
---

## **COE 96 - Spirit**

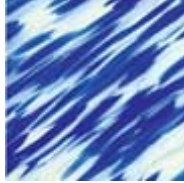
**Spirit/694-7SF**



**Spirit/4941SF**



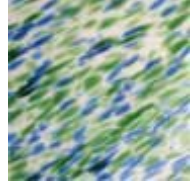
**Spirit/431-76SF**



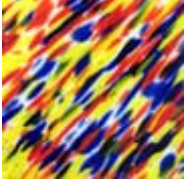
**Spirit/4361-76SF**



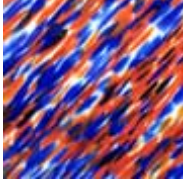
**Spirit/623-76SF**



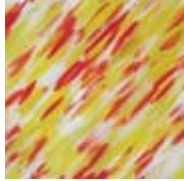
**Spirit/6356-7SF**



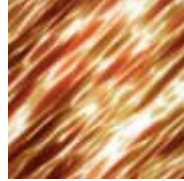
**Spirit/635-7SF**



**Spirit/4561SF**



**Spirit/6115-7SF**



**Spirit/4001SF**



---

## **COE 96 OpalArt**

**OA634-52SF**



**OA335-5SF**



**OA233-54SF**



**OA623-52SF**



**OA325-52SF**



**OA675-5SF**



**OA244-54SF**

